



Pantone

Color of the Year 2019



Color of
the Year
2019

PANTONE®

Living Coral
16-1546

Pantone Color of the Year 2019

글로벌 색채전문기업 '팬톤(PANTONE)'
은 해마다 **사회현상을 반영하고 사회에
전하고 싶은 메시지를 담아 '올해의 컬러
'를 선정 발표.**



PANTONE



'리빙코랄(Living Coral)'은 해양 생태계
에서 중요한 역할을 하는 **산호초에서 영
감을** 얻었으며 지구온난화 등의 영향으
로 산호초의 서식지가 줄어들고 있고
2030년에는 지금의 2/3로 줄어들 것으로
보고 있다.
PANTONE에서는 '리빙코랄(Living
Coral)'을 통해 **자연 보호에 대한 메시지**
를 담고 있다.

2019년의 컬러는 바다 속 산호초와 비슷한 컬러로 활력이 넘치면서도 따뜻한 교감의 의미를 담은 '리빙코랄Living Coral'이 선정되었으며 생동감 넘치면서도 부드러운 컬러로 2019년 패션, 화장품, 디자인, 산업, 상품, 소셜미디어를 통해 자주 접하게 될 것으로 보입니다.





PANTONE 16-1546 Living Coral *Tools for Designers*

Tools for Designers



Living Coral in Product Design

Living Coral is naturally suited for product across all ages and genders. Materials with texture and convivial colors such as PANTONE 16-1546 Living Coral appeal to our desire for products exhibiting humanizing and heartening characteristics.

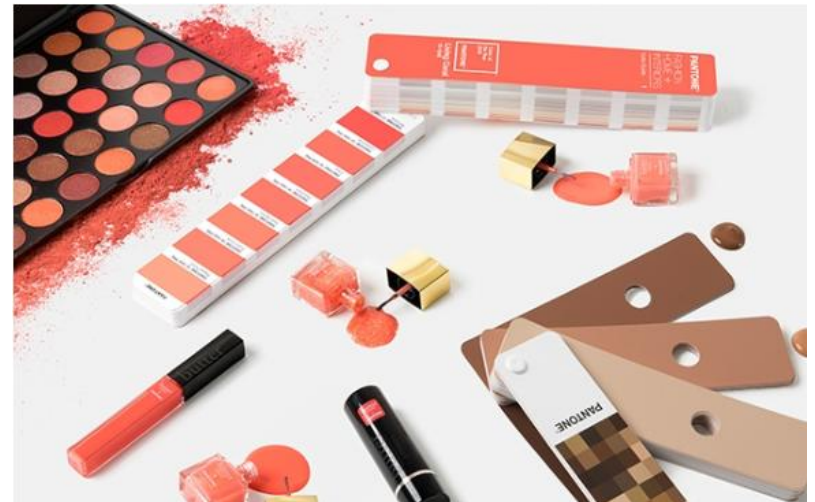


PANTONE 16-1546 Living Coral *Tools for Designers*

Tools for Designers

Living Coral in Beauty

As a life-affirming hue that complements all skin tones, PANTONE Living Coral brings natural color to beauty in blush, eye and lip. Uninhibited, playful looks are also emboldened by Living Coral, which, as the center of a kaleidoscope of color, encourages experimentation in beauty with palettes, textures, shimmers and sheens.





PANTONE 16-1546 Living Coral *Tools for Designers*

Tools for Designers



Living Coral in Interior Décor and Furnishings

When used as a bold statement in settings and décor, Living Coral fosters immersive experiences such as pop-up installations and interactive spaces, tied to a playful spirit. As a color linked to tactility and human connection, Pantone Living Coral in shag rugs, cosy blankets and lush upholsteries create a warm, comforting and nurturing feeling in the home. With its ebullient nature, PANTONE Living Coral adds a dramatic pop of color to any room setting whether in decorative accessories, tabletop, or on the wall.

“

2019 S/S Color Palette–Trend color

1. Fiesta
2. Jester Red
3. Turmeric
4. Living Coral
5. Pink Peacock
6. Pepper Stem
7. Lemon Verbena
8. Princess Blue
9. Toffee
10. Mango Mojito
11. Terrarium Moss
12. Pressed Rose



PANTONE®

17-1564
Fiesta



PANTONE 17-1584 *fiesta*



Spring/Summer 2019 Ready To Wear

Valentino



Spring/Summer 2019 Ready To Wear

Balenciaga



Spring/Summer 2019 Ready To Wear

Poiret



Spring/Summer 2019 Ready To Wear

Sonia Rykiel

PANTONE®

19-1862
Jester Red



PANTONE 19-1862 *Jester Red*



Fall/Winter 2018 Haute Couture

Iris Van Herpen



Spring/Summer 2019 Ready To Wear

CALVIN KLEIN



Spring/Summer 2019 Ready To Wear

Alexander Wang



Fall/Winter 2018 Haute Couture

Givenchy

PANTONE®

15-1264
Turmeric



PANTONE 15-1264 *Turmeric*



Spring/Summer 2019 Ready To Wear

Valentino



Spring/Summer 2019 Ready To Wear

Hermès



Spring/Summer 2019 Ready To Wear

Fendi

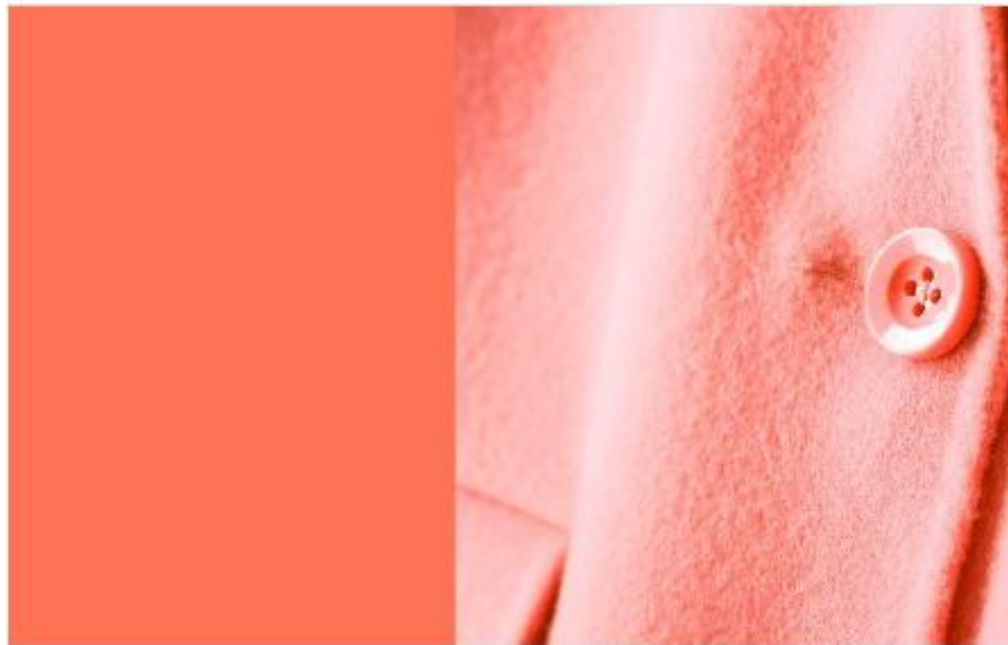


Spring/Summer 2019 Ready To Wear

Fendi

PANTONE®

16-1546
Living Coral



PANTONE 16-1546 *Living Coral*





Spring/Summer 2019 Ready To Wear

Poiret



Spring/Summer 2019 Ready To Wear

Marine Serre



Spring/Summer 2019 Ready To Wear

Rejina Pyo



Spring/Summer 2019 Ready To Wear

Prabal Gurung

PANTONE®

18-2045
Pink Peacock



PANTONE 18-2045 *Pink Peacock*



Spring/Summer 2019 Ready To Wear

Balenciaga



Spring/Summer 2019 Ready To Wear

Balenciaga



Spring/Summer 2019 Ready To Wear

Giorgio Armani

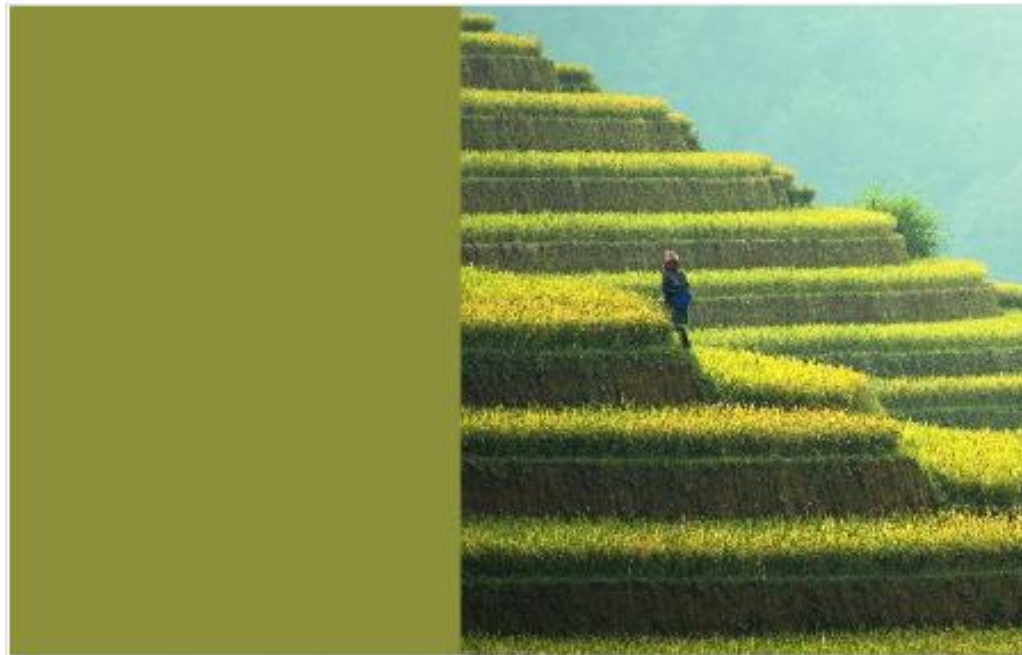


Spring/Summer 2019 Ready To Wear

Gabriela Hearst

PANTONE®

17-0542
Pepper Stem



PANTONE 17-0542 *Pepper Stem*



Spring/Summer 2019 Ready To Wear
Palmer Harding



Spring/Summer 2019 Ready To Wear
Palmer Harding



Spring/Summer 2019 Ready To Wear
Molly Goddard



Spring/Summer 2019 Ready To Wear
Molly Goddard

PANTONE®

13-0850
Aspen Gold



PANTONE 12-0742 *Lemon Verbena*



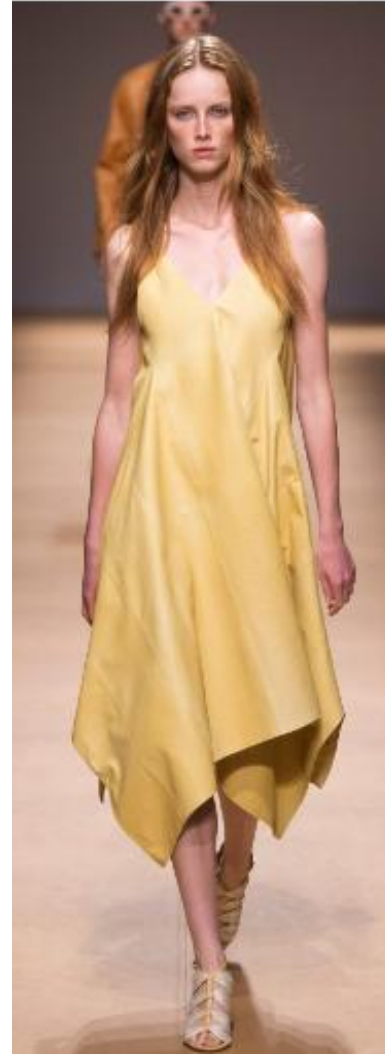
Spring/Summer 2019 Ready To Wear

Chanel



Spring/Summer 2019 Ready To Wear

Olivier Theyskens



Spring/Summer 2019 Ready To Wear

Salvatore Ferragamo



Spring/Summer 2019 Ready To Wear

Etro

PANTONE®

19-4150
Princess Blue



PANTONE 19-4150 *Princess Blue*



Ready to wear 2019 S/S
A.P.C



Spring/Summer 2019 Ready To Wear
Givenchy



Spring/Summer 2019 Ready To Wear
Givenchy



Spring/Summer 2019 Ready To Wear
Balenciaga

PANTONE®

18-1031
Toffee



PANTONE 18-1031 *Toffee*



Spring/Summer 2019 Ready To Wear

Haider Ackermann



Spring/Summer 2019 Ready To Wear

Rick Owens



Spring/Summer 2019 Ready To Wear

Lemaire



Spring/Summer 2019 Ready To Wear

Fendi

PANTONE®

15-0960
Mango Mojito



PANTONE 15-0960 *Mango Mojito*



Spring/Summer 2019 Ready To Wear

Givenchy



Spring/Summer 2019 Ready To Wear

Dries Van Noten



Spring/Summer 2019 Ready To Wear

Poiret

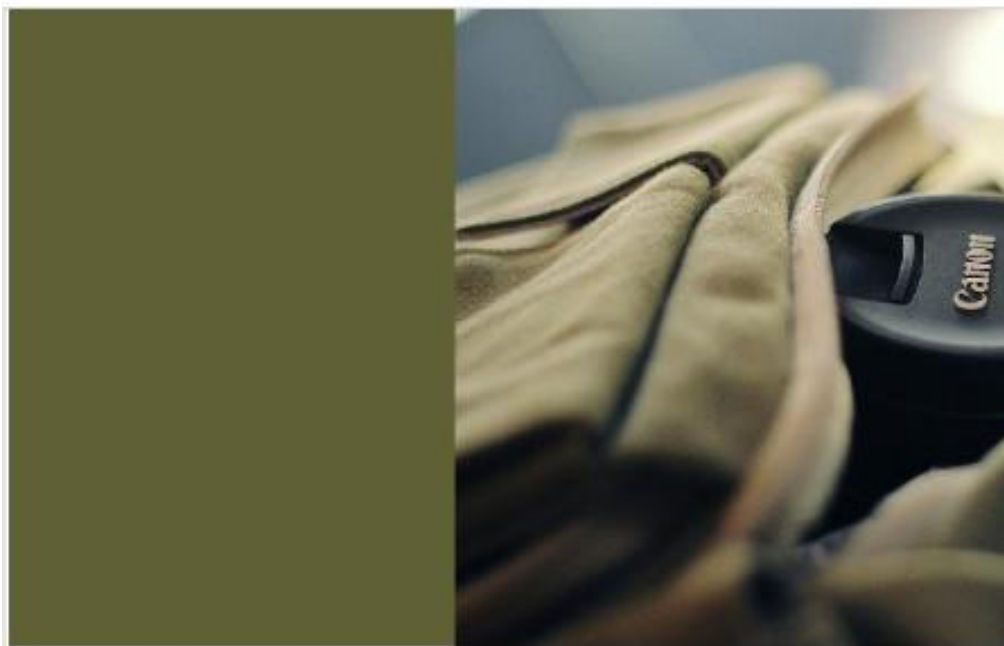


Spring/Summer 2019 Ready To Wear

Poiret

PANTONE®

18-0416
Terrarium Moss



PANTONE 18-0416 *Terrarium Moss*



Spring/Summer 2019 Ready To Wear
Max Mara



Spring/Summer 2019 Ready To Wear
Alberta Ferretti



Spring/Summer 2019 Ready To Wear
R13



Spring/Summer 2019 Ready To Wear
Longchamp

PANTONE®

14-2808
Sweet Lilac



PANTONE 15-1619 *Pressed Rose*



Spring/Summer 2019 Ready To Wear
Salvatore Ferragamo



Spring/Summer 2019 Ready To Wear
MSGM



Spring/Summer 2019 Ready To Wear
Emporio Armani



Spring/Summer 2019 Ready To Wear
Gucci

“

2019 S/S Color Palette—neutral color



1. Soybean
2. Eclipse
3. Sweet Corn
4. Brown Granite



PANTONE 13-0919 *Soybean*



Spring/Summer 2019 Ready To Wear

Rochas



Spring/Summer 2019 Ready To Wear

Hermès



PANTONE 19-3810 *Eclipse*



Spring/Summer 2019 Ready To Wear

Emporio Armani



Spring/Summer 2019 Ready To Wear

Emporio Armani



PANTONE 19-0805 *Brown Granite*



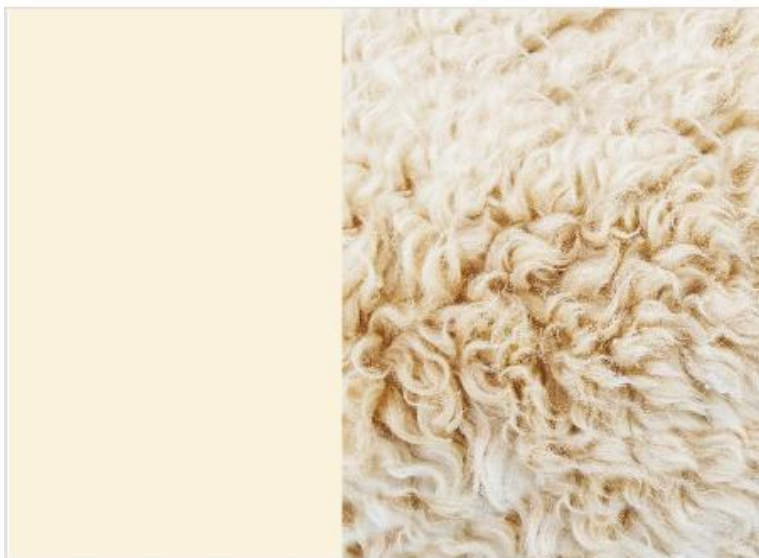
Spring/Summer 2019 Ready To Wear

Fendi



Spring/Summer 2019 Ready To Wear

Fendi



PANTONE 11-0106 *Sweet Corn*



Spring/Summer 2019 Ready To Wear
Alberta Ferretti



Spring/Summer 2019 Ready To Wear
No. 21



2019 팬톤 올해의 컬러
리빙코랄 추천 배색 컬러 팔레트 5

PANTONE 16-1544 TPG
Persimmon

PANTONE 16-1539 TPG
Coral

PANTONE 16-1546 TPG
Living Coral

PANTONE 17-1656 TPG
Hot Coral

1.114

Premium
Paints
inspired by



“

FOCAL POINT



Color Harmonies



그린과 그레이가 주를 이루는 이 팔레트에서
리빙코랄은 등대처럼
즉각적으로 관심을 끄는 역할을 합니다.

리빙코랄의 따뜻하고 생기있는 톤은
다른 컬러들과 어우러져
더욱 생생하게 표현되는데요.

리빙코랄을 섬세하고 고급스럽게 연출하고 싶다면
이 팔레트를 활용해 보세요!

“

SHIMMERING SUNSET



Color Harmonies



다양한 핑크와 오렌지 계열로 이루어진 이 팔레트는
하늘을 가로지르는 눈부신 색채를 연상시키는데요.

이 팔레트에서 리빙코랄은 활기찬 컬러감으로
따스함을 더해주는 역할을 합니다.

“

SYMPATICO



PANTONE®
16-1546
Living Coral



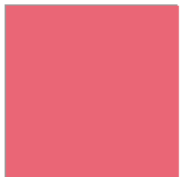
PANTONE®
19-1540
Burnt Henna



PANTONE®
16-1522
Rose Dawn



PANTONE®
14-1224
Coral Sands



PANTONE®
17-1736
Sun Kissed Coral



PANTONE®
15-1621
Candlelight Peach

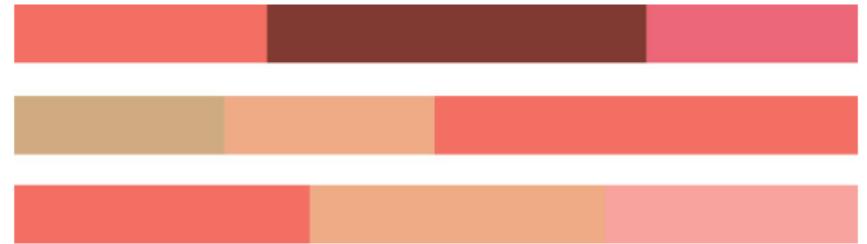


PANTONE®
15-1225
Sand



PANTONE®
13-1014
Mellow Buff

Color Harmonies



다양한 피부톤의 컬러 배색이 돋보이는 이 팔레트는
부드럽고 건강한 느낌이 돋보입니다.

자연스러운 느낌을 강조하고 싶거나,
피부톤과 매치가 중요한
패션, 뷰티 제품 등의 디자인에서는
이 팔레트를 참고하면 좋을 것 같죠? :)



TRIPPY



PANTONE®
13-0650
Sulphur Spring



PANTONE®
16-1546
Living Coral



PANTONE®
18-3634
Chive Blossom



PANTONE®
19-2045
Vivacious



PANTONE®
17-4530
Barrier Reef



PANTONE®
18-4834
Deep Lake



PANTONE®
17-4245
Ibiza Blue



PANTONE®
16-1735
Pink Lemonade

Color Harmonies



이 팔레트의 이름인 'Trippy'는 우리말로
몽롱한, 비현실적인, 멋진 등의 의미를 지닙니다.

몽환적인 색조가 돋보이는 이 팔레트는
강렬한 동시에 순수함이 돋보이는데요.

리빙코랄은 낙천주의와 즐거움,
그리고 자연스러움을
풍부하게 나타내는 컬러로 활용될 수 있습니다.

“

UNDER THE SEA



PANTONE®
19-3940
Blue Depths



PANTONE®
19-4053
Turkish Sea



PANTONE®
17-5126
Viridian Green



PANTONE®
17-0330
Turtle Green



PANTONE®
16-1546
Living Coral



PANTONE®
15-1912
Sea Pink



PANTONE®
13-0858
Vibrant Yellow



PANTONE®
13-4810
Limpet Shell

Color Harmonies



2019 올해의 컬러로 리빙코랄이 발표되면서
바닷속에서 헤엄치는 물고기와
아름답게 빛나는 산호의 모습이 담긴
영상이 공개되었는데요.

이 팔레트는 열대 섬의 해양환경을 연상시킵니다.
산호초가 해양 생물들에게
먹이와 안식처를 제공하듯,
생동감 넘치면서도 부드러운 리빙코랄의 특성을
강조시킬 수 있는 팔레트인데요.

다채로운 바다 속 환경을 담아낸
아름다운 컬러 배색이 돋보인답니다.